



# ARISTON

The home of sustainable comfort



# Aures Multi

Electronic Instantaneous Multi Point Water Heaters

**Compact, efficient, very quick** and **elegant**, the new Aures electric instantaneous water heaters are the ideal solution for having **hot water immediately ready** right after you open the tap.



**MULTI POINT**

Hot water to multiple points



**FLOW SENSOR**

Auto-On when flow is detected



**TOTAL SAFETY**

Double Safety Thermostat



**SPACE SAVING**

Blends harmoniously into your living spaces



**EASY INSTALLATION**

Easy to install and maintain



**ENERGY EFFICIENT**

Limited water and heat loss



**ITALIAN DESIGN**

Designed by Umberto Palermo



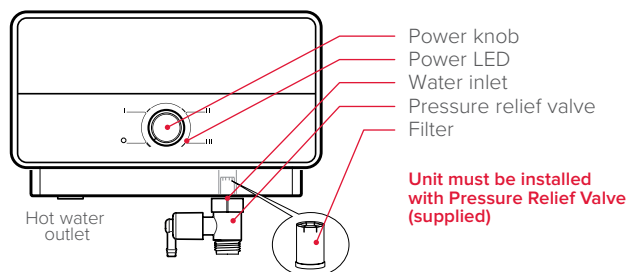
## Aures Multi Point Features and Benefits

### Comfort Regulation:

/ Set the desired performance with an easy to use power dial

## Installation (wall mounted only)

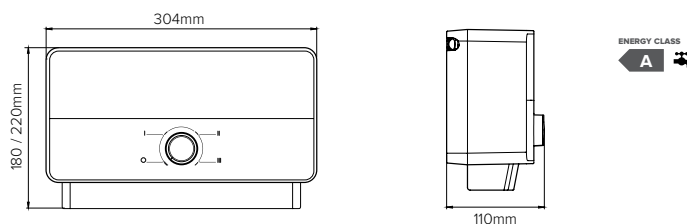
**MULTI POINT** can supply more water points at the same time (pressurised).



**To be installed with supplied accessories only**

| Installation Guide          |   |                    |                             |
|-----------------------------|---|--------------------|-----------------------------|
| <b>Product connection</b>   |   |                    |                             |
| <b>Product installation</b> | <table border="1" style="width: 100%; border-collapse: collapse;"> <tr> <td style="width: 50%; text-align: center;"> <b>Correct</b><br/> </td> <td style="width: 50%; text-align: center;"> <b>Wrong DANGEROUS!</b><br/> </td> </tr> </table> | <b>Correct</b><br> | <b>Wrong DANGEROUS!</b><br> |
| <b>Correct</b><br>          | <b>Wrong DANGEROUS!</b><br>   |                    |                             |

## Technical Information



|                                | Aures Multi 7kW                   | Aures Multi 9.5kW | Aures Multi 12KW 3 Phase |
|--------------------------------|-----------------------------------|-------------------|--------------------------|
| Model Name                     | Aures M 7 EU                      | Aures M 9.5 EU    | Aures M 12 TR EU         |
| Product Code                   | 3195218                           | 3195215           | 3195219                  |
| ErP Class                      | A                                 | A                 | A                        |
| Power (kW)                     | 7                                 | 9.5               | 12                       |
| Type                           | Multi point installation - Hidden |                   |                          |
| Voltage (V)                    | 220 - 240                         | 220 - 240         | 400 - 415                |
| Phase                          | Single Phase                      | Single Phase      | Three Phase              |
| Ampere (A)                     | 34,6                              | 47,1              | 17,9                     |
| Recommended fuse rating (Amps) | 40                                | 50                | 3 x 32                   |
| Recommended Cable Size         | 6mm <sup>2</sup>                  | 10mm <sup>2</sup> | 3 x 6mm <sup>2</sup>     |
| Frequency (Hz)                 | 50/60                             | 50/60             | 50/60                    |
| Heating Element                | Copper                            | Copper            | Copper                   |
| Minimum Flow Rate (L/min)      | 2,1                               | 2,1               | 2,1                      |
| Working Pressure (Min - Max)   | 50kPa ~ 800kPa                    | 50kPa ~ 800kPa    | 50kPa ~ 800kPa           |
| Max Working Temp (°C)          | 55                                | 55                | 55                       |
| IPX Rating                     | IP25                              | IP25              | IP25                     |
| Dimension WxLxD (mm)           | 304 x 180 x 110                   | 304 x 220 x 110   | 304 x 220 x 110          |

## Understanding Performance

The temperature and flow rate of the water entering the product determines how well it performs.

Flow rate - For higher performance (temperature), reduce the flow rate (use the below chart for guidance).

| MODEL             | PERFORMANCE |                   |
|-------------------|-------------|-------------------|
|                   | DT (°C)     | FLOW RATE (L/MIN) |
| AURES M 7 EU      | 20°         | 5,0               |
|                   | 25°         | 4,0               |
|                   | 30°         | 3,3               |
| AURES M 9.5 EU EU | 20°         | 6,8               |
|                   | 25°         | 5,5               |
|                   | 30°         | 4,5               |
| AURES M 12 TR EU  | 20°         | 8,6               |
|                   | 25°         | 7,0               |
|                   | 30°         | 5,7               |

**Ambient water temperature** – The product can only heat the water by a certain amount of degrees ( $\Delta T$ ). In winter when the incoming water temperature is colder, the output water temperature will be less. Please reduce the flow rate to compensate.



**2** WARRANTY  
On tank and product



**1** WARRANTY  
On heating element

\* Terms and conditions apply

The warranty period is valid from your purchase date (please retain proof of purchase) and on condition that the unit was installed by a qualified electrician in accordance with the instructions enclosed in the unit.

